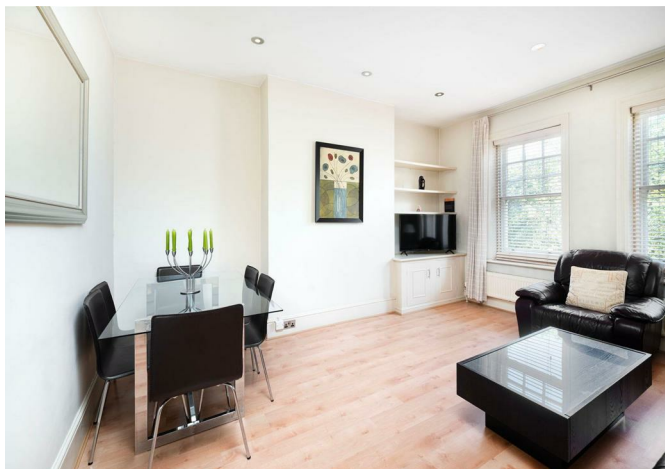


CHARMILL

RESIDENTIAL



Edgware Road, Little Venice W2
£550,000



A well-proportioned, spacious one bedroom apartment arranged on the second floor of a period conversion situated in Little Venice. This wonderfully located apartment comprises a reception/dining room with wooden flooring, separate fully fitted eat-in kitchen, a double bedroom with fitted wardrobes and a shower room.

The apartment is situated moments from Regent's Canal and Clifton Road which offers a vast array of charming cafes, restaurants and shops. Warwick Avenue station (Bakerloo line) and Edgware Road station (Bakerloo, Circle, District and Hammersmith & City lines) are both a short stroll away being 0.4 and 0.5 miles away respectively. Paddington station is also within easy reach, offering Circle, District, Bakerloo and Hammersmith & City lines together with National Rail services and the Heathrow Express providing access to Heathrow Airport in 15 minutes as well as the new Elizabeth line connecting you to Canary Wharf in just 18 minutes.



PGK | PREMIUM GERMAN KITCHENS

CASA
ARABIAN HAM

